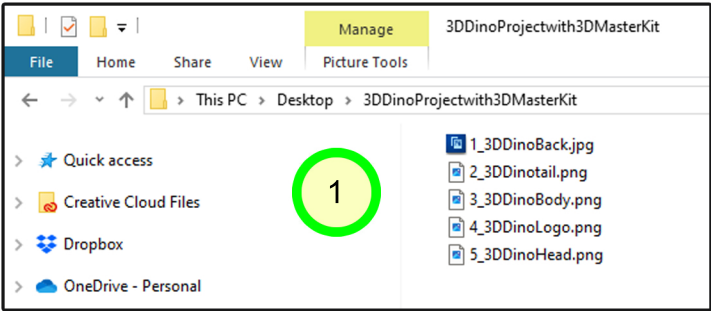
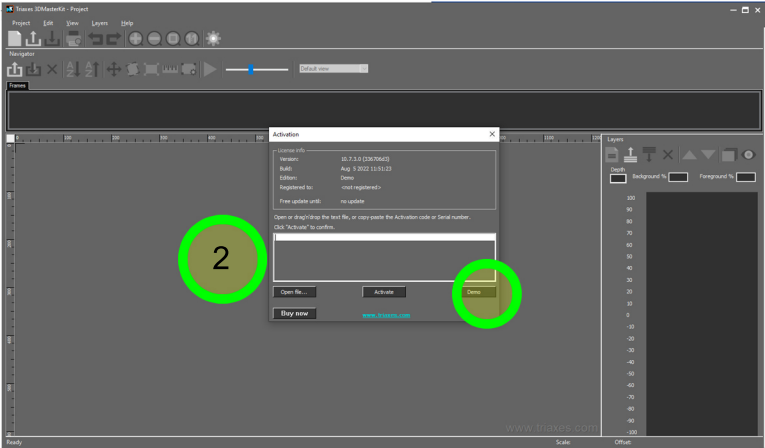


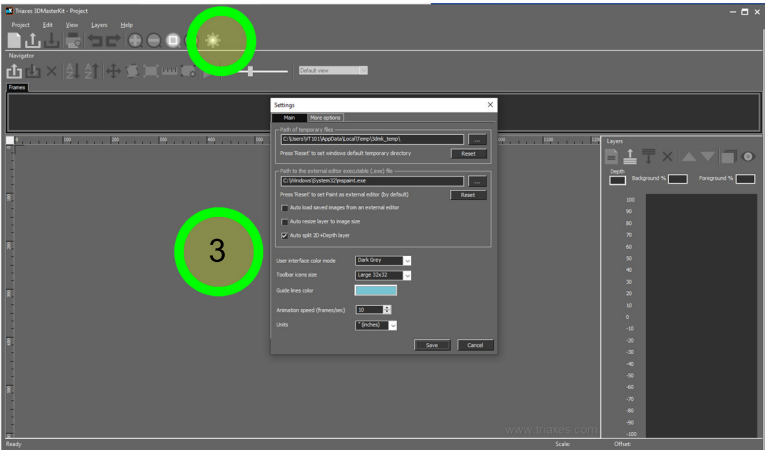
1 **Download 3DDinoProjectwith3DMasterKit graphics folder** to your PC Desktop. The finished printed interlaced image size will be 6 inches W x 4 inches T. The Graphics are built wider and taller, (7 inch W x 4.25 inches T at 300 DPI), for 3D left to right movement and bleed.



2 **Download and Install 3D MasterKit from Triaxes.com Website.**  
**Open 3D MasterKit on PC desktop.**  
(it is ok to use demo version for testing).

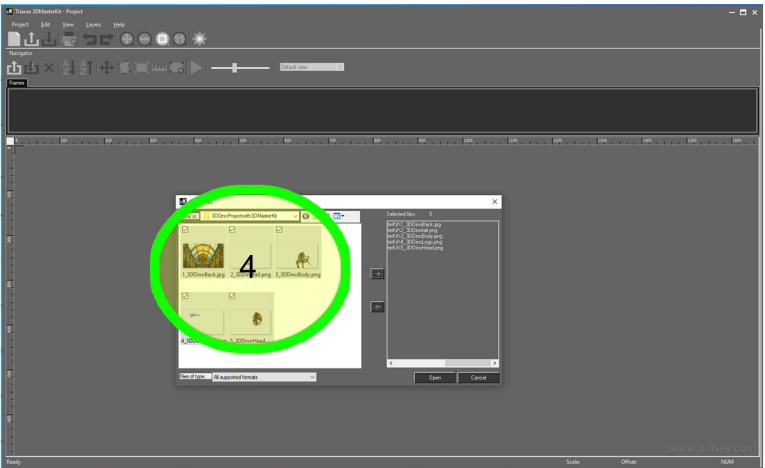


3 **Change Units of Measure to Inches.**



4 **Select Layers, then Add.**  
Locate the graphics folder on your desktop.

**Select the Layers and Click Open.**



5 **Assign Depth to the Layers.**  
Start with the Bottom (Back) Layer and **Click on the Image in the Square** to the Left of the eye. (numbering your files names may help!)

This will **activate the Depth Slider**. Move the Slider up or down to the desired Depth. For this test image we used -70 for the Background Layer Depth.

For this test we chose these Depths:

5_3DDinoHead	70
4_3DDinoLogo	03
3_3DDinoBody	-15
2_3DDinoTail	-50
1_3DDinoBack	-70

You can choose your own Depth by repeating this step on each Layer.

